

RAILTON MEEKS



359 Wilmslow Road

Fallowfield, Manchester, M14 6XU

£750 Per Calendar Month



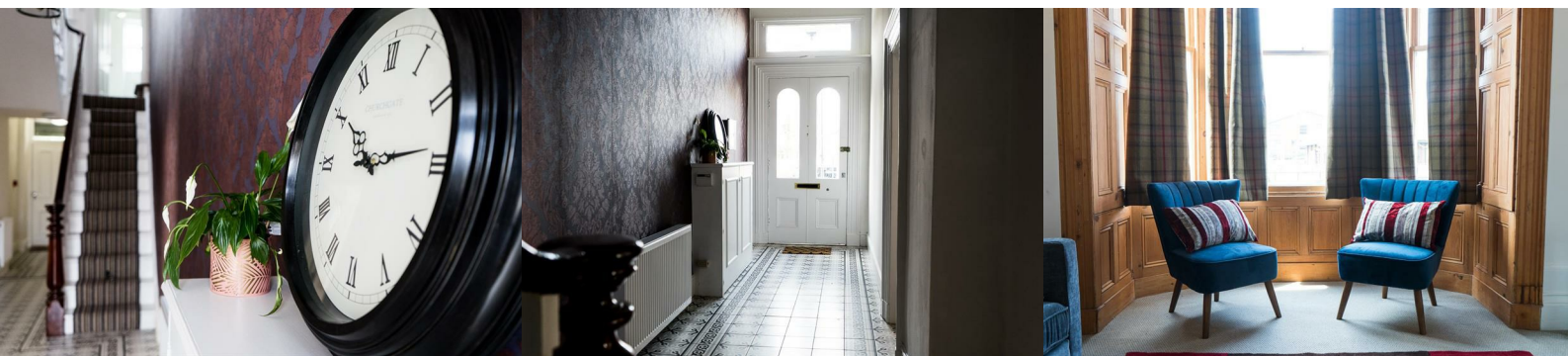
Wilmslow Road, Fallowfield, Executive prof house share, refurbished to a high standard.

1 Double room available from 4th March 2026

Completely refurbished Victorian property, this property consists of 7 huge double bedrooms four of which have ensuite including shower, Three of the bedrooms will share one large bathroom with shower, all of the bedrooms are fully furnished.

The house has been completely renovated throughout, it has original Victorian features including Sash windows, Victorian open fire to the living room.

The kitchen has a full gas range cooker and an electric hob, electric oven, full size fridge, full size freezer, microwave, boiling water tap, Belfast sink leading from the kitchen is a good sized utility room with two



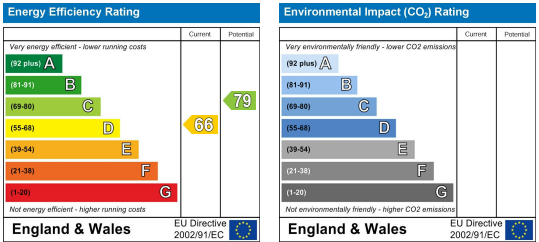
Area Map



Floor Plans



Energy Efficiency Graph



These particulars, whilst believed to be accurate are set out as a general outline only for guidance and do not constitute any part of an offer or contract. Intending purchasers should not rely on them as statements of representation of fact, but must satisfy themselves by inspection or otherwise as to their accuracy. No person in this firms employment has the authority to make or give any representation or warranty in respect of the property.